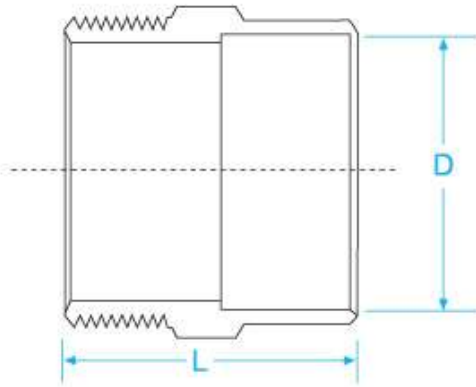


OHO® BRONZE FITTINGS

Bronze Fittings are manufactured to BS EN 1254-2. With bronze material, no fluxes required in brazing procedure.

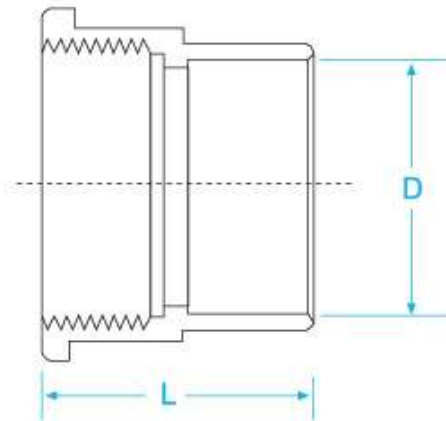
2008/08 Edition Printed Catalog



| PART | MATERIAL |
|------|----------|
| Body | Bronze |



Model 303AD
Bronze Male Adaptor



| PART | MATERIAL |
|------|----------|
| Body | Bronze |



Model 304AD
Bronze Female Adaptor

Dimensions (mm)

| | Size | Model 303AD | | | | | | | | Model 304AD | | | | | | |
|----------|--|-------------|-------|-------|-----|-----|----|-----|-------|-------------|----|-------|----|-------|-------|-------|
| | | ½" | ¾" | 1" | 1¼" | 1½" | 2" | 2½" | 3" | 4" | ½" | ¾" | 1" | 1¼" | 1½" | 2" |
| L | Length | 23 | 31.50 | 35.50 | 43 | 51 | 56 | 74 | 72 | 96 | 24 | 27.50 | 33 | 45.50 | 49.50 | 59.50 |
| D | Solder Ends Internal Diameter | 15 | 22 | 28 | 35 | 42 | 54 | 64 | 76.50 | 108.40 | 15 | 22 | 28 | 35 | 42 | 54 |

| Model No. | Material | Nominal Pipe Size |
|-----------|----------|-------------------|
| 4090G | Bronze | ½" ¾" 1" |
| 4092G | Bronze | ½" |



Model 4090G
Bronze Elbow 90°



Model 4092G
Bronze Elbow 90°

Due to continuous product development, data is not binding and may change without prior notice